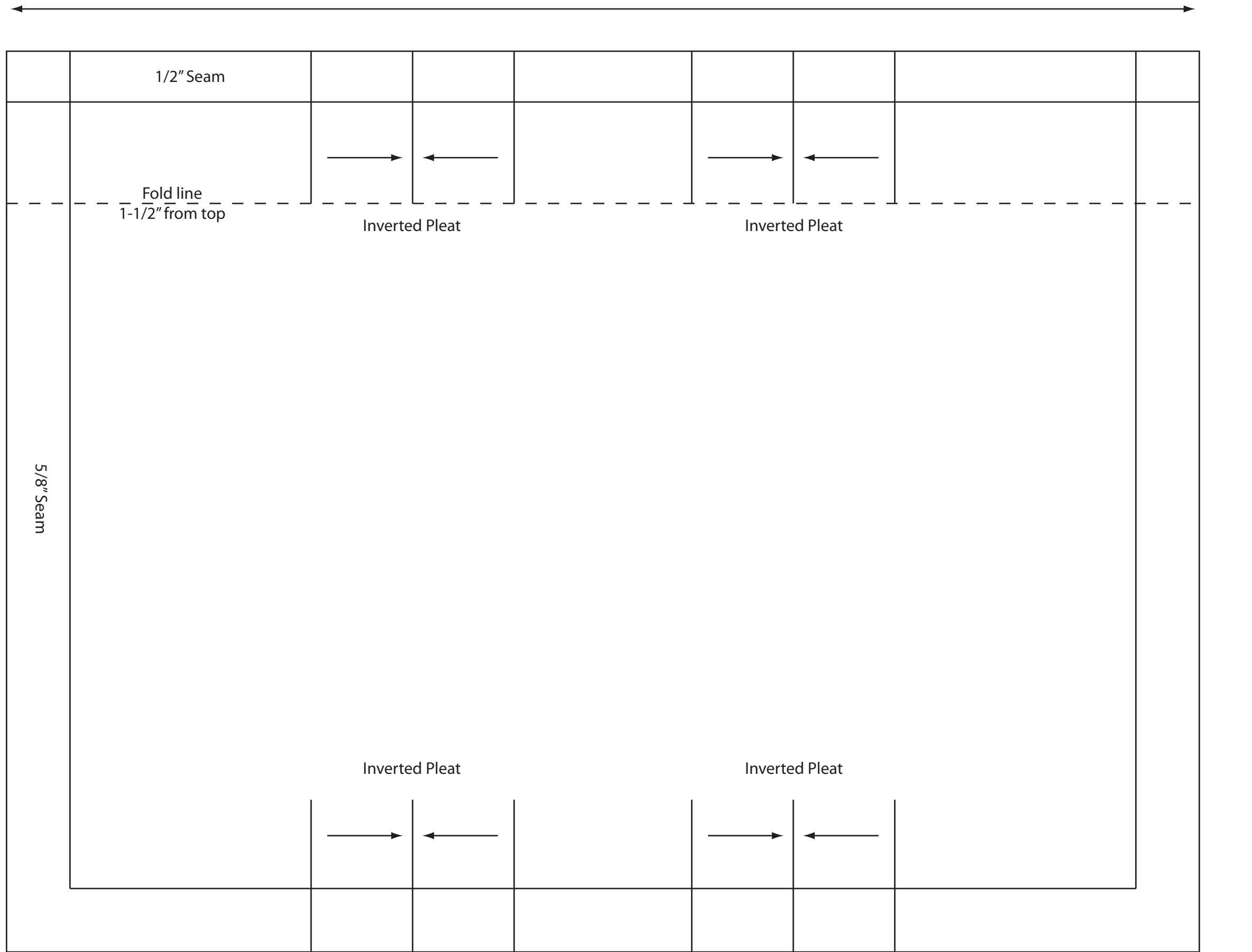


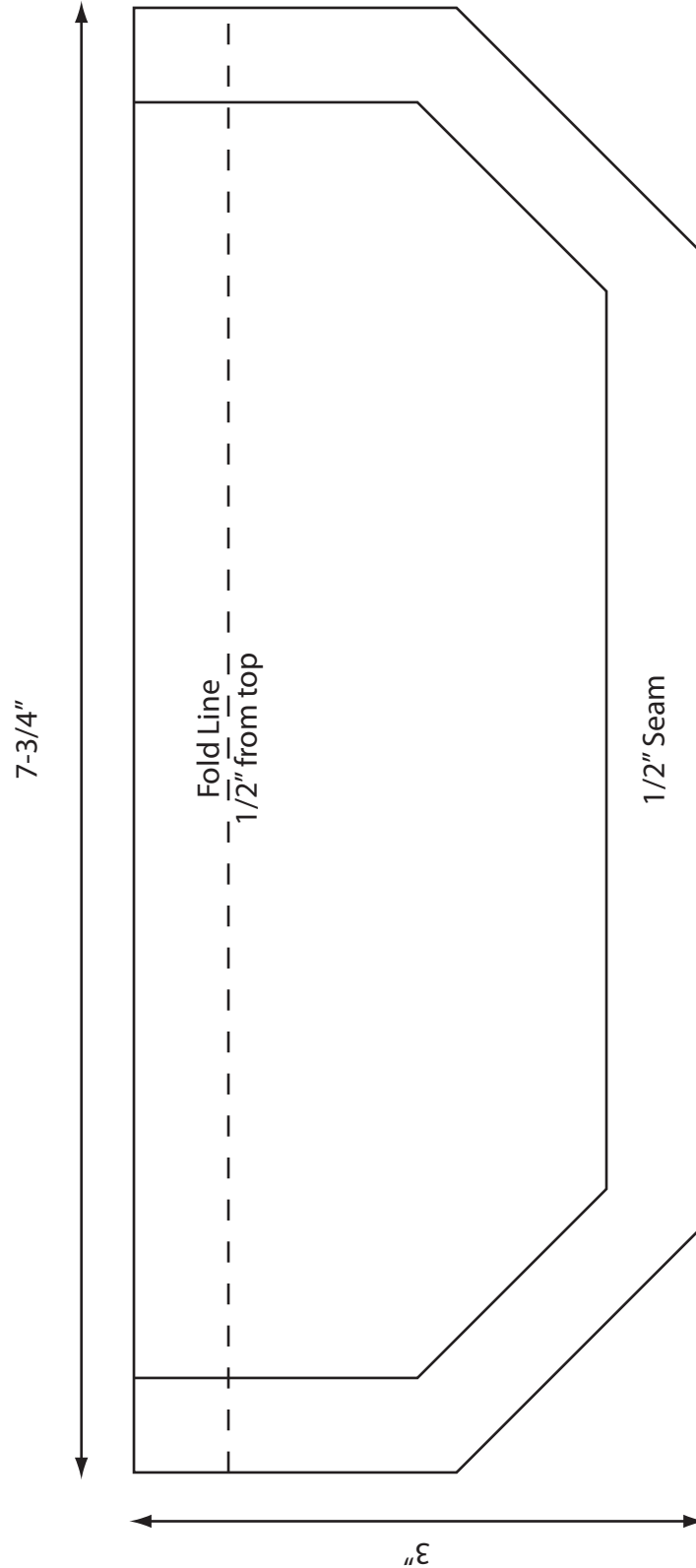
11-3/4"



8-7/8"

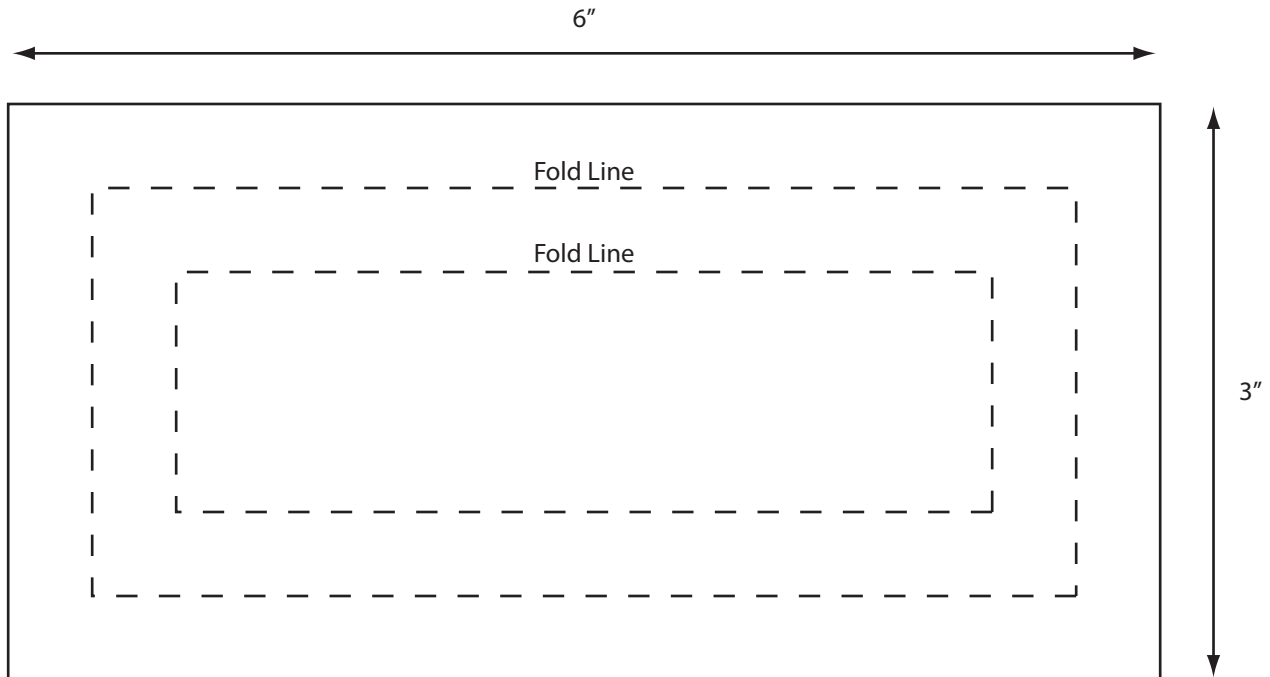
**NOSTROMO CREW COSTUME  
BREAST POCKET**

# NOSTROMO CREW SHIRT BREAST POCKET FLAP



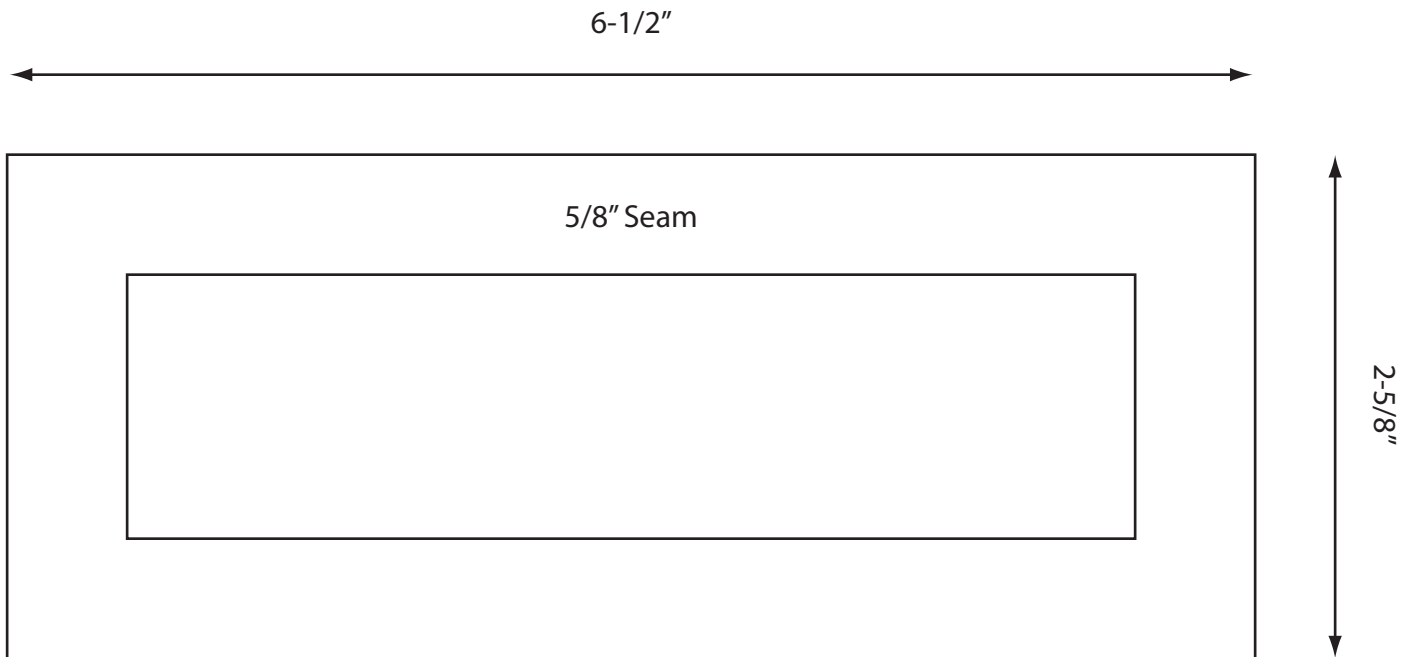
Sew pink piping into seam. Tuck ends of piping into inside of flap just before fold line.

# NOSTROMO CREW SHIRT NAME TAG HOLDER



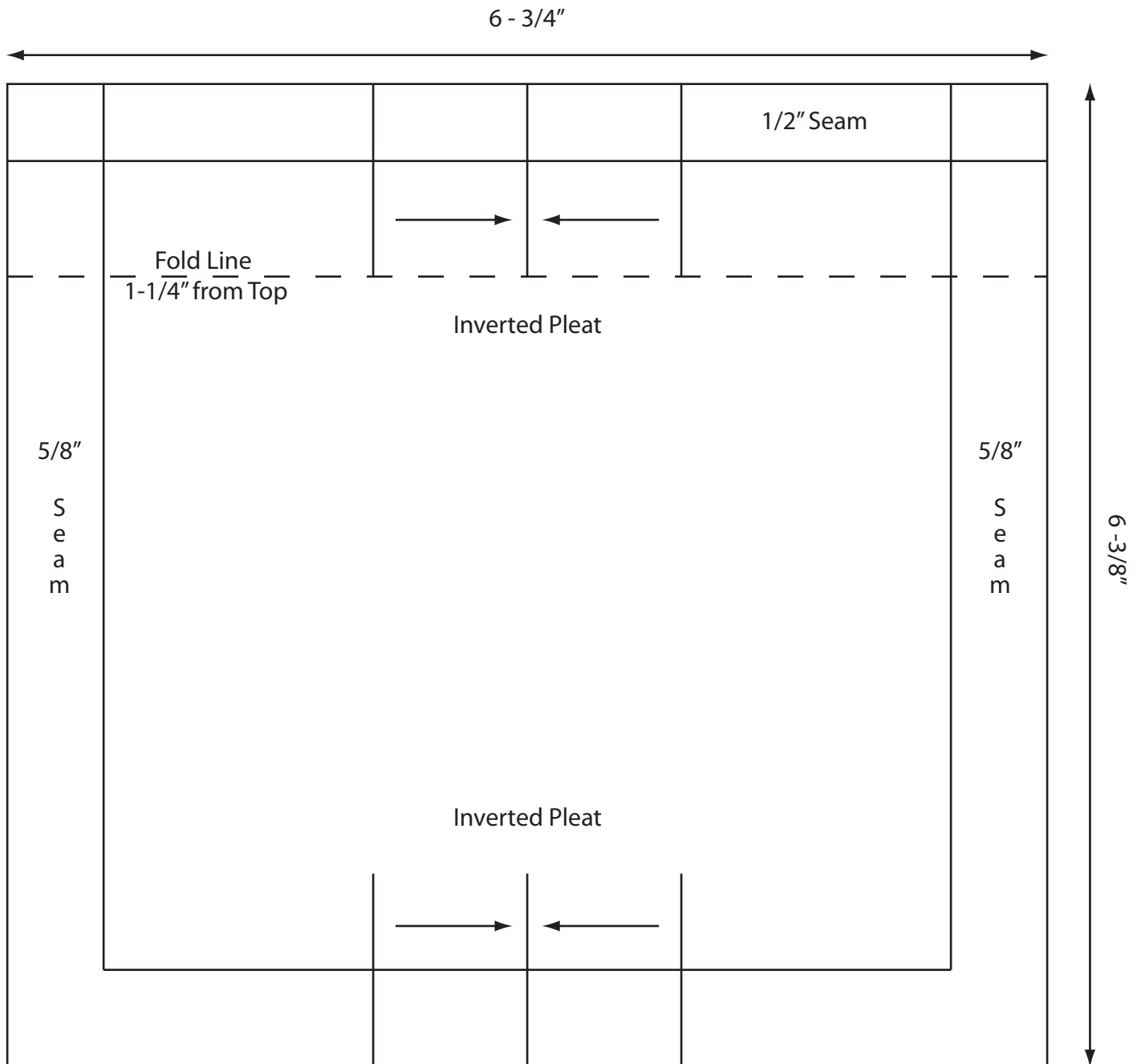
Sew a corner hem at all four corners (like hemming a tablecloth or napkin) then edgestitch to the shirt above the left pocket with the "hem" facing out to form the name tag holder with nice mitered inside corners.

# NOSTROMO CREW SHIRT SHOULDER PATCH



Miter the seam allowance and edgestitch to the shirt at the shoulder

# NOSTROMO CREW SHIRT SLEEVE POCKET (LEFT SLEEVE)



# NOSTROMO CREW SHIRT EPAULETTE

